

Page 162 TYPE 9 MINATURES.

Page 164 TYPE 10 CHEESE PRESSES

Page 164 TYPE 11 STRAINERS

TYPE 9 MINATURES.

CLASS 9A Crude Miniatures.

CLASS 9B Fine Miniatures.

The numbering of the variants has been based on what the prototype of a miniature appears to have been. The variant code is the same as the original type code. The dating of Miniatures is difficult as they tend to be one-off vessels without close parallel or internal development. They are often made in non-standard fabrics and styles to add further complication.

Class 9A Crude miniatures.

9A2 Based on beaker forms.

9A2.1 Upchurch S3/lh orange. JD. 40-80. Unique.

9A2.2 Shorne S3/5h. MA. 40-100. Unique.

9A3 Based on Jar forms.

9A3.1 Cooling S3/6h. MC.AKL, 50-70. Unique.

9A3.2 Cooling S3/6h. MC.AKL. 50-70. Unique.

9A3.3 Upchurch S3/lh. JS. 40-70. Unique.

9A3.4 Cooling S3/6h. PC. 40-70. Unique.

9A3.5 Upchurch S3/lh. JD. 40-70. Unique.

9A3.6 Upchurch S3/lh. RP 614. 40-70. Base spalled. Unique.

9A3.7 Cliffe H1/4h. PC. 50-150. See class 3D; the shell employed is proportionately finer in this miniature. Unique.

9A4 Based on bowl forms.

9A4.1 Upchurch S3/lhb. RT 146. 50-80. Richborough 313 is dated 50-80. Rare.

9A5 Based on dishes.

9A5.1 Cliffe H1/4h. PC. 50-150. Burned on the inside. Rare.

9A5.2 Cooling S3/6h. EF. 170-230. Rare.

Unclassified.

9A0.1 Upchurch S3/lh. RV 201. 40-70, Possibly a multiple pot similar to Cam 494. Rare.

Class 9B Fine miniatures.

These are all wheel turned, if not wheel-thrown.

9B2 based on beaker forms.

9B2.1 Upchurch N1/lb. RV 282. 70-130. Rare.

9B2.2 Upchurch N2/lb. R¥ 213. 70-130. Rare.

9B2.3 Upchurch N2/lb. BM 56 7-1-5130. 70-130. Rare.

9B3 Based on jar forms.

9B3.1 Cooling S1/6. MC.ZA. 170-230. Unique.

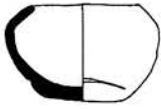
9B3.2 Cooling S3/6h. MC.AXK. 50-70. Unique.



9A2.1



9A2.2



9A3.1



9A3.2



9A3.3



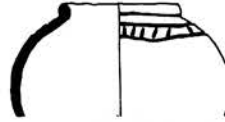
9A3.4



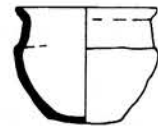
9A3.5



9A3.6



9A3.7



9A4.1



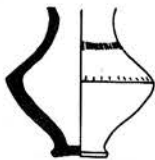
9A5.1



9A5.2



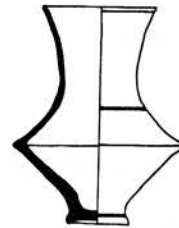
9A0.1



9B2.1



9B2.2



9B2.3



9B3.1



9B3.2



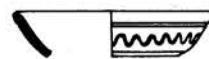
9B3.3



9B4.1



9B4.2



9B5.1

9B3.3 Cooling S1/6h. MC. 170-210. Unique. 9B4 Based on bowl forms.
9B4.1 Cooling S1/6h. MC.AJR. 170-230. Unique.
9B4.2 Cliffe S1/4b. PC. 100-150. Two sets of marks "III" were scratched onto vessel after firing. Unique.

9B5 Based on dish forms.

9B5.1 Cliffe SI/4b. HC. 140-240. See 5F. Unique.

TYPE 10 CHEESE PRESSES.

Class 10A Cheese press lid.

10A1.1 Cliffe S1/4. PC. 70-200.Rare.

10A1.2 Cliffe S1/4. PC. 70-200.Rare.

Vessels similar to those above are also known from Upchurch in S3/1.

Class 10B Cheese press bases. 10B1.1 Cliffe S1/4. PC. 70-200. Rare.

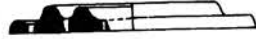
Fragments of cheese presses are "Rare" finds, although fairly typical of certain marsh sites.

TYPE 11 STRAINERS.

This class only includes vessels which appear to have had a special strainer/colander role. It does not include vessels of other classes adapted to fulfil such a function.

11A1.1 Upchurch S3/1. RV 649. 50-100. Unique.

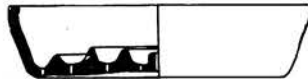
11B1.1 Cliffe S3/4. PC. 40-70. Thompson SI is post-conquest. Rare. Fragments of strainer bases are "Rare" finds.



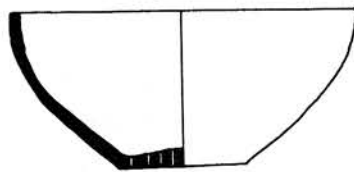
10A1.1



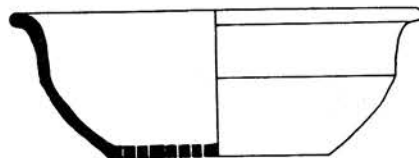
10A1.2



10B1.1



11A1.1



11B1.1

[To Contents page](#)