

TYPE 5 DISHES.

Page 136	Flanged dishes.
Page 138	CLASS 5B Fine flanged dishes.
Page 140	CLASS 5C Plain "pie dishes".
Page 144	CLASS 5D Decorated "pie dishes".
Page 147	CLASS 5E Simple or "dog dishes".
Page 150	CLASS 5F Grooved dishes.

TYPE 5 DISHES.

- CLASS 5A Flanged dishes.
- CLASS 5B Fine flanged dishes.
- CLASS 5C Plain "pie dishes".
- CLASS 5D Decorated "pie dishes".
- CLASS 5E Simple or "dog dishes".
- CLASS 5F Grooved dishes.

Class 5A Flanged dishes.

The whole class is derived from BB1 prototypes, i.e. Gillam 226-232. They are given a date of 220 onwards in the north. The class may have been made from the very end of the second century until the end of the third or possibly later.

5A1 with incipient flange.

5A1.1 Higham S1/3b. 170/190-250. Reconstruction, based on Pollard's GF V, iii at Oakleigh. The form is known from 180 onwards at Mucking (R. Jeffries pers. com.). This is the earliest variant of the class. There were none in Rochester deposits dated c. AD 150 (Harrison and Flight 1968, 84), At Springhead, a sealed deposit containing a coin of c. AD 160 contained a 5A1 sherd. Dover 505 is in a deposit of the late second or early third century, although could be BB1. Rare.

5A2 With a high, thin flange.

5A2.1 Cooling S1/6b. MCAFG. 210/230-320/350. Post-dates main Cooling levels. In Broomhey gas pipeline (Richard Pollard pers. com.) dated 230-290. Rare.
5A2.2 Cooling S1/6b. MC.KD. 210/230-320/350. Parallel found in a third century deposit (Meates, Greenfield, Birchenough 1952, 55, 63). Rare.

5A3 With thin rim formed by drawing back clay from flange.

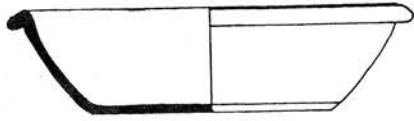
5A3.1 Upchurch S1/1b. MK 5 UC 24. 250-350, Only found on inshore sites. Rare.

5A4 With rounded flange.

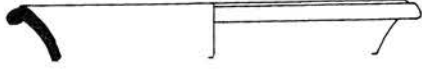
5A4.1 Cliffe S1/4b. HC. 200/240-320/350. Common. 5A4.2 Upchurch S1/1b. JD. 200/240-320/350. Common. 5A4.3 Cliffe S1/4b. HC. 200/240-320/350. Common.

5A5 With thin flange, rim formed by drawing clay from inside of vessel. 5A5.1 Upchurch S1/1b. JD. 180/200-320/350. Third or fourth century at Ospringe (630). With a 2G1 in a grave (Youens 1905b, lxxix). Paralleled in the third century at Lullingstone (Meates, Greenfield, Birchenough 1952, 55, 64). At Canterbury, 5A5 is often found in association with second century samian. Occurs in otherwise mid-second century deposits at Springhead. Cam 305 is 250-340. Common only on inshore sites.

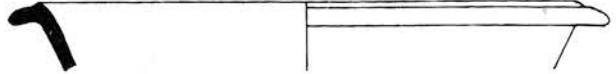
5A5.2 Cooling S1/6b. MC.XI. 180/200-320/350. Common.



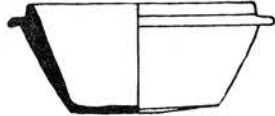
5A1.1



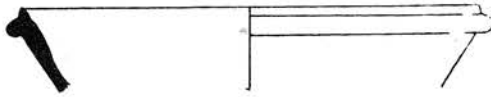
5A2.1



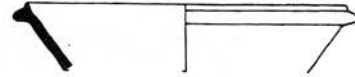
5A2.2



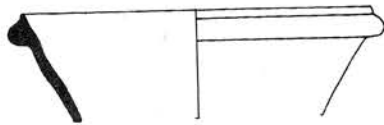
5A3.1



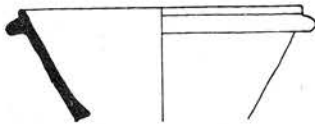
5A4.1



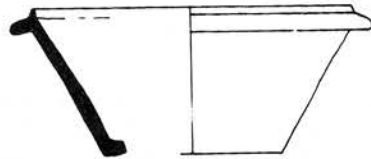
5A4.2



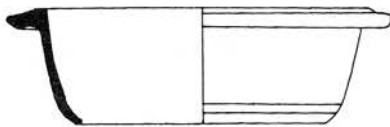
5A4.3



5A5.1



5A5.2



5A6.1



5A6.2

5A6 With cranked flange.

5A6.1 Cliffe S5/4b and S1/3b. HC. 200-300. Pollard GF IV, i at Oakleigh. Rare.

5A6.2 Upchurch S1/lb. JS. 200-300. Analysed as UD 76 (Monaghan 1982b). Rare.

Unclassified.

5A0.1 Upchurch S1/lbs. JS. 200-350. Rare.

Class 5B Fine flanged dishes.

This class has no relationship with class 5A, nor with any other dish class. The vessels are deep versions of platters (Type 7). The inspiration is continental and the fabrics are normally finer than other dishes.

5B1 Flange is half way down body.

5B1.1 Upchurch N1/lb. JD. 75-190/250. Possibly derived from Dr. 38 of the later second century. Marsh (1978, 167, 33.6) states that the form is not a derivative of Dr. 36. Curie 11 may be a more likely prototype which would give a Flavian-Hadrianic date. At Canterbury, the form is late second-third century. The vessel is unlikely to have been influenced by later colour coat forms such as Oxford C 59. Rare.

5B2 With high, undulating flange.

5B2.1 Upchurch N3/1. JS. 90-130. Marsh and Tyers (1976, 141-146) discern a continental origin for this form. Rare.

5B2.2 Upchurch N1/1. MC.ACL. 90-130. Southwark VC1, Marsh (1978, 33) is 90-130. Rare.

5B2.3 Upchurch 12/1. JD. 90-130. Rare. 5B2.4 Upchurch N2/lb. JD. 90-130. Rare.

5B3 With hooked flange incorporating a groove. 5B3.1 Upchurch N2/lb. JD. 70-130. Rare.

5B3.2 Upchurch N2/1. JS. 70-130. Analysed as UA33 and UA33r (Monaghan 1982b). Rare.

5B4 With outcurved flange-rim.

5B4.1 Upchurch N1/1. GS. 70-130. Rare.

5B4.2 Upchurch N1/lb. HC. 70-130. Rare.

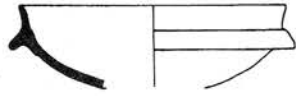
5B4.3 Upchurch N1/lbs. JS. 70-130. Compare Marsh 1978, figure 33. Rare. 5B5 Flange turns sharply downwards from rim.

5B5.1 Upchurch N2/lb. MM SI 1962, Milfordhope. 60/70-130. Richborough 221 is 50-75. Marsh 1978, type 33.2 is late first to early second century. Ritterling 12 is Flavian and earlier, but the vessel also resembles Dr 36 and need not be directly derived from either. Rare.

5B5.2 Upchurch N1/lb. JS. 60/70-130. Analysed as UA36 (Monaghan 1982b). Rare.

5B6 With short, thick flange. 5B6.1 Upchurch N1/lb. JD. 70-130. Rare. 5B6.2

Upchurch N2/lb. JD. 70-130. Rare. 5B6.3 Upchurch N3/1. JS. 70-130. Rare.



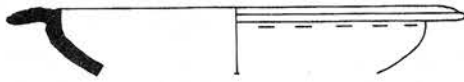
5B1.1



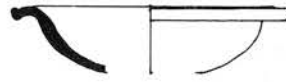
5B2.2



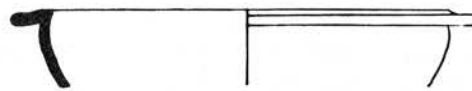
5B2.1



5B2.3



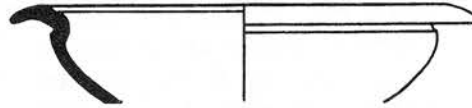
5B2.4



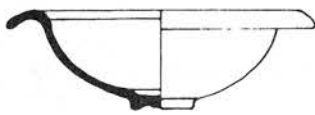
5B2.5



5B3.1



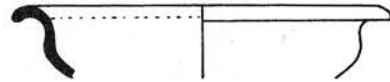
5B3.2



5B4.1



5B4.2



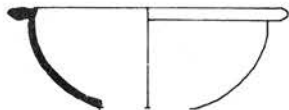
5B4.3



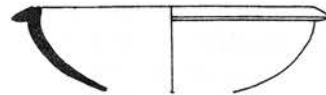
5B5.1



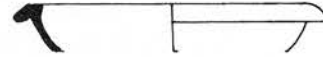
5B5.2



5B6.1



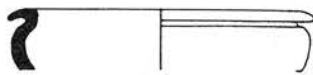
5B6.2



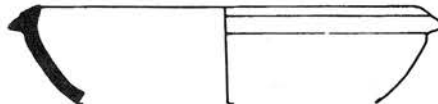
5B6.3



5B0.1



5B0.2



5B0.3

Unclassified.

5B0.1 Upchurch S1/1. JD. 70-130. Unique. 5B0.2 Cooling S3/6. MC.MO. 50-70. Unique. 5B0.3 Upchurch S1/lb. JD. 70-110. Unique.

Class 5C Plain "pie dishes".

The form is a simple open dish with almost straight walls topped by a rolled rim of various sections. It is popularly called a "pie dish". It is distinguished from 5D by the absence of decoration. 5C started to replace 5D around 150 and predominated by 170. Some examples may have been made as early as 120. Cam 38 is dated 120-400. 5C dishes are known from mid-second century deposits at Springhead. The Cooling site has 5C to the exclusion of 5D. The variants are defined by the manner in which the rim was formed. 5C is probably the most abundant of all the vessel classes.

5C1 With rolled rim of rounded profile (120/150-230/250).

5C1.1 Upchurch S1/1. RA 181. 150/170-240, Southwark IVH6 is late second century. At Mucking, the variant is early third century. Numerous Kentish deposits of the late second and early third include the variant: it is 170-190 in Rochester (Harrison and Flight 1968, 84, 39). It is in late Antonine deposits at Lullingstone (Meates, Greenfield and Birchenough 1952, 58, 76-79). In the north, it is found in late second and early third century levels at Housteads. Common.

5C1.2 Cooling S1/6b. MC.AAE. 170/190-220-230. Rare.

5C1.3 Upchurch S1/lb. MM 5 UC 21. 150/170-240. Roughly equivalent to Gillam 313, dated 190-240. Abundant,

5C1.4 Cliffe S5/4b and S1/4b. HC. Similar vessel at Dover was with samian dated 150-195 (419). Abundant.

5C1.5 Shorne S1/5b. MA. 150/170-240. Equivalent to Gillam 225, dated 200-250. Southwark IVH7 is late second century. Abundant. 5C1.6 Upchurch S1/lb and S5/lb. 150/170-240. Abundant.

5C2 With rolled rim of triangular profile (120/150-210).

The triangular rim is an early second century feature. 5C2 is far less common than 5D2.

5C2.1 Cooling S1/6b. DF. 120/150-210. Common.

5C2.2 Cliffe S1/4b. PC. 120/150-210. Southwark IVH4 is 140 onwards. The rim form is similar to Gillam 222, dated 150-210. Common. 5C2.3 Cliffe S1/4b. HC. 120/150-210. Rare.

5C3 With rim squared off on underside (150/170-250).

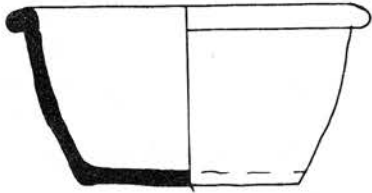
5C3.1 Upchurch S1/lb. JS. 150-250. West Kent 369 was in a deposit dated 150-250. Abundant.

5C3.2 Upchurch S1/lb. FS. 150/180-250. Gillam 313 is 190-240. Abundant. 5C3.3

Cooling S1/6b. MC.AGO. 170/190-210/230. Unique. 5C3.4 Upchurch S1/lb and S1/1. JD. 150-210. Abundant. 5C3.5 Upchurch S2/lb. JD. 150/170-210. Rare in S2/1.

5C4 With downward rolled, overhanging rim (150/170-250).

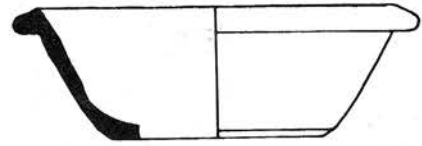
5C4.1 Cliffe S5/4b. HC. 150/180-250. Examples from Vindolanda included 91 (235-250/260) 9 (163-205/7) and 133 (250-260). Dover 333 was with coins



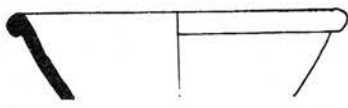
5C1.1



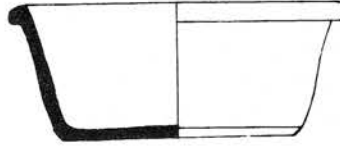
5C1.2



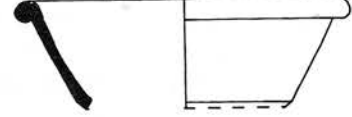
5C1.3



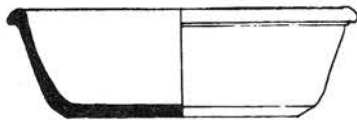
5C1.4



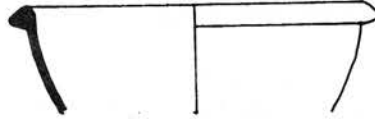
5C1.5



5C1.6



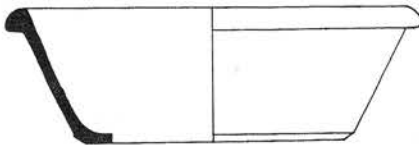
5C2.1



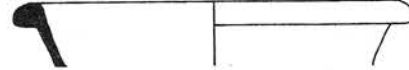
5C2.2



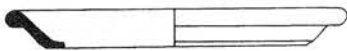
5C2.3



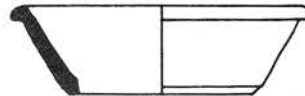
5C3.1



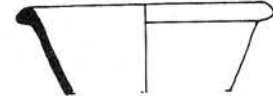
5C3.2



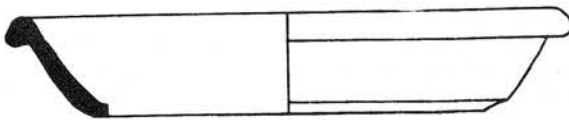
5C3.3



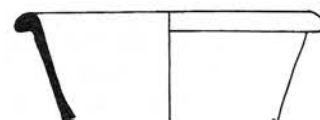
5C3.4



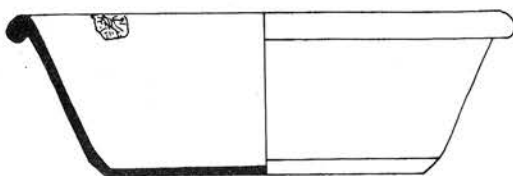
5C3.5



5C4.1



5C4.2



5C4.3

dated 270-300. Cam 38 is 175-300. Southwark IVH5 is late second century. Abundant.

5C4.2 Upchurch S2/lb and S5/lb. JD. 150/170-250. In mid-second century deposits at Tower Hill, London. Rare.

5C4.3 Cooling S1/6b and S5/6b. MC. 150/180-250. Abundant.

5C4.4 Cooling S1/6b. MC. ACC. 170/190-210/230. Parallels at Old Ford were in levels dated to the late third and fourth centuries (Isaac, Schwab, Sheldon 1978, 66, 41 and 76, 248). At the Custom House, they were found in late second century levels (Tatton-Brown 1974, 161, 142). Dover 632 was with a coin dated 168-169. Canterbury Defences 132, 25, was dated 240-260. Abundant.

5C4.5 Cooling S1/6b. MC. 150/180-250. Abundant.

5C5 Rim is pinched outwards and upwards into triangular profile.

No undecorated examples could be found with an equivalent rim form to 5D5.

5C6 Rolled rim is keyed into body and smoothed off.

5C6.1 Cliffe S1/4b also S2/lb and S1/lb. HC. 190-240. Common.

5C7 The rim is only partly rolled and the top is rounded off (120/170-200/230).

5C7.1 Upchurch S1/lb. JS. 170-230. Rare. 5C7.2 Upchurch S1/lb. JD. 120-200. Rare.

5C8 With squared off bead rim.

The bead may be of various sizes. Variants of this sort probably belong to the earlier stages of "BB" style production. 5C8.1 Upchurch S1/l. JS. 120-200. Rare.

5C9 With rounded bead rim and rounded body profile.

5C9.1 Upchurch N1/lb. JD. 150-250. This variant is departing from the standard in both fabric and shape, approaching 5B. Rare.

5C10 Rim is incompletely turned over and left square-ended (170/200-250).

5C10.1 Cooling S1/6b. MC.BJ. 170/190-210/230. The form occurs at Mucking in the third century (21, 22). Rare.

Unclassified.

There are many non-standard examples of 5C: just a few of them are listed below.

5C0.1 Cliffe S1/4b orange-pink. HC. 120-240. Discoloured, probably kiln waste. Rare.

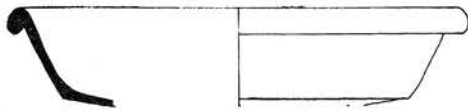
5C0.2 Upchurch N2/lb. FS. 120-200. Unique.

5C0.3 Upchurch S3/lb. FS. 100-200. Possibly not a true 5C at all. Unique. 5C0.4 Cooling S1/6bs orange-pink. MC.KW. 170/190-210/230. Unique.

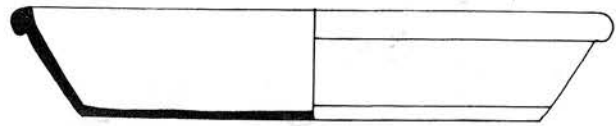
5C0.5 Cooling S1/6b. MC.AGN. 170/190-210/230. Rare.

5C0.6 Cliffe S1/4b orange-pink. HC. 110-240. Probable waste. Rare.

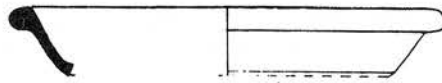
5C0.7 Cliffe S1/4. HC. 120-240. Rare.



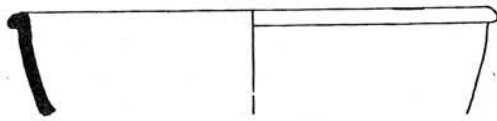
5C4.4



5C4.5



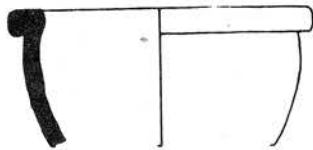
5C6.1



5C7.1



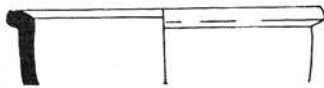
5C7.2



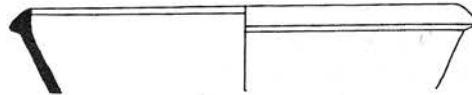
5C8.1



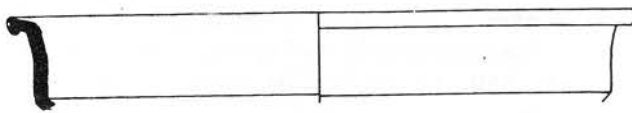
5C9.1



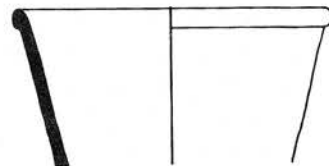
5C10.1



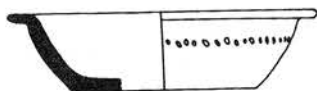
5C0.1



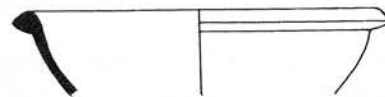
5C0.2



5C0.3



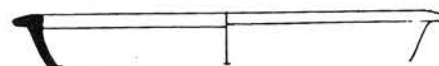
5C0.4



5C0.5



5C0.6



5C0.7

Class 5D Decorated roll-rimmed "pie dishes".

5D emerged circa 110/120, presumably as an imitation of BB1 forms, although with the addition of a simple basal chamfer and no suggestion of a carination. Gillam 220 has a date of 125-160, Gillam 221 is dated 140-180. Gillam 306-307 are dated 120-160. Variants 5D1-5D5 have the same rim profiles as 5C1-5C5. 5D precedes 5C and is the main dish form until c. 170. It persists into the third century on individual sites, predominantly in the north, but should be regarded as primarily a second century form.

5D1 Rolled rim with a rounded profile (110/120-180/200+).

Most 5D rims appear more triangular than their 5C counterparts.

5D1.1 Upchurch S1/lb. MK 5 UC 25. 110/120-150/180. Southwark IVH4 is 140 onwards. At Dover, the form is dated 70-170 (214, 455). Gillam 224 has the same design and is dated 190-240. Cam 37 is 70-130, Two examples are known dated 160-250 and to the early second century (Williams et al 1975, 137, 113), One vessel is known to have been found with samian dated 130-140 (Williams 1946, 73, 1). Common.

5D1.2 Cliffe S1/4b. PC. 110/120-150/180. Vessel has been scored internally, probably by metal utensils. Common.

5D1.3 Cliffe S5/4b. HC. 110/120-150/180. Common.

5D1.4 Cliffe S1/4b. HC. 110/120-150/180. Southwark IVH2 is 130/140 onwards. Dover 656 is dated 150-200. Common.

5D1.5 Cliffe S1/4b orange-pink. HC. 110/120-150/180. Dover 586 was in mid second to early third century deposits. Common.

5D1.6 Cliffe S1/4b. MM, Springhead. 110/120-150/180. Dover 540 was in second century deposits. Rare.

5D1.7 Shorne S1/5b. AS. 110/120-150/180. Common.

5D1.8 Cliffe S1/4b. HC, Thatchers Lane. 110/120-150. Stratified in grave with a Dr 18/31 of "Quintus" and a Dr 33 of "Cinna", both of the first half of the second century.

5D2 Rim is turned over, producing a triangular profile (110/120-180). The most common variant of 5D2.

5D2.1 Cliffe S1/4b. HC. 110/120-150/180. At Tower Hill, the type is only associated with second century pottery. Occurs in the later second century at the Custom House (Tatton-Brown 1974, 157, 141). Southwark IVE1 is 130 onwards. Richborough 339 is dated 80-120. Dover 770 was with samian dated 160-190. Abundant.

5D2.2 Cliffe S1/4b. HC. 110/120-150/180. Abundant.

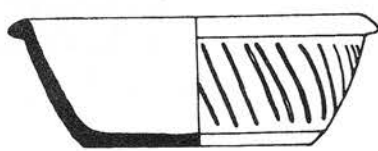
5D2.3 Cooling S1/6b. MC.VB. 110/120-150/180. Rare at Cooling Broomhey Farm site, suggesting that production took place between the two main activity phases, i.e. in the interval 90-170/210. Abundant, but not in S1/6b.

5D2.4 Shorne S1/5b. MA. 110/120-150/180. Gillam 222 is 150-210. Abundant.

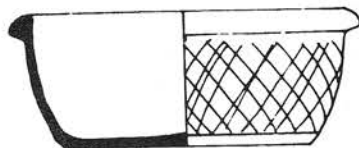
5D2.5 Cliffe S1/4b. HC. 110/120-150/180. Canterbury Defences 137, 8 was 150-180. Abundant.

5D3 Rolled rim squared off on underside (120-190).

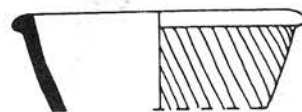
5D3.1-2 Cliffe S1/4b orange-pink. HC. 120/130-170/190. Probable wasters. Common.



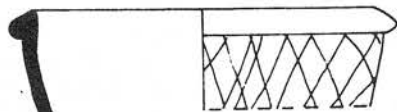
5D1.1



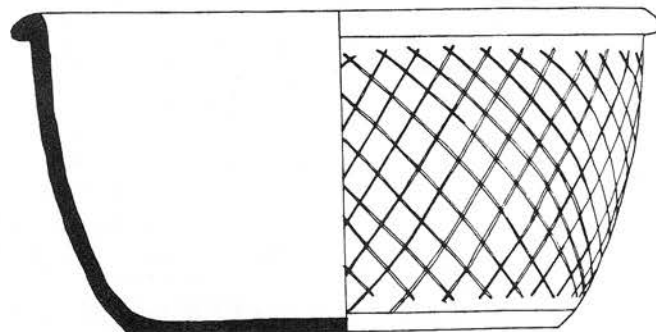
5D1.2



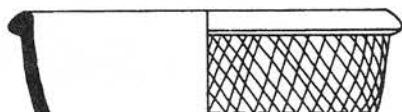
5D1.3



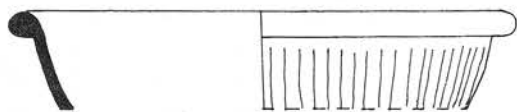
5D1.4



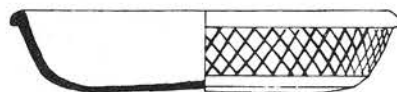
5D1.6



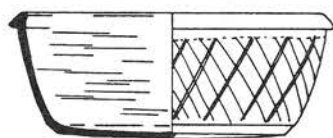
5D1.5



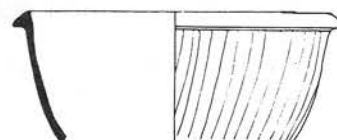
5D1.7



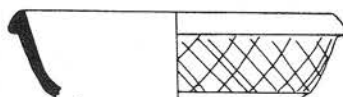
5D1.8



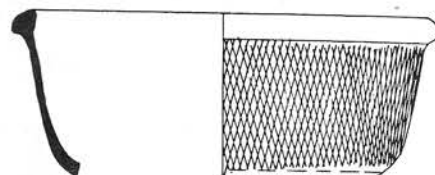
5D2.1



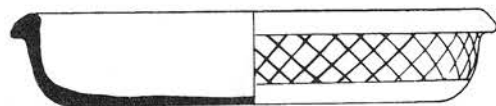
5D2.2



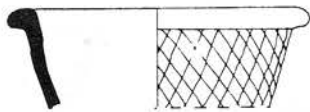
5D2.3



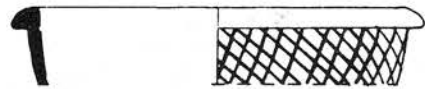
5D2.4



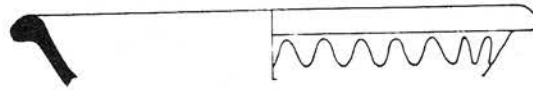
5D2.5



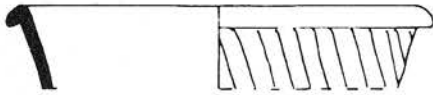
5D3.1



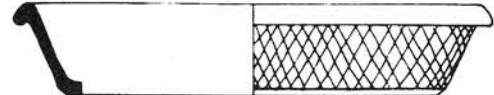
5D3.2



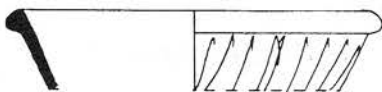
5D3.3



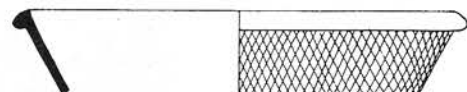
5D4.1



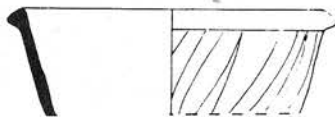
5D4.2



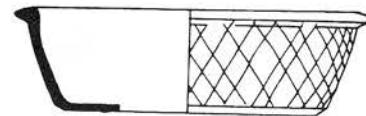
5D5.1



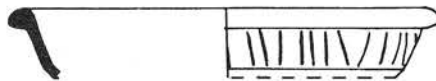
5D5.2



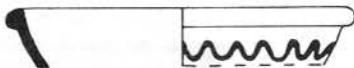
5D5.3



5D5.4



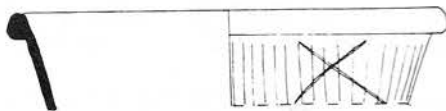
5D6.1



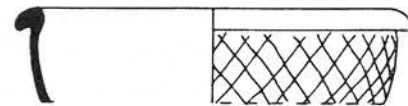
5D7.1



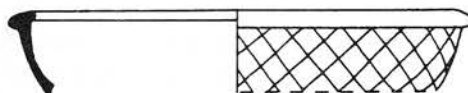
5D7.2



5D0.1



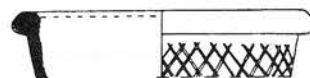
5D0.2



5D0.3



5D0.4



5D0.5

5D3.3 Cliffe S1/4b. HC. 120/150-170/190. Occurs in deposits dated 100-180 in the Canterbury Defences (132, 16). In late second and early third century levels at Sewingshields (Haigh and Savage, 1984, 27, 100). Common.

5D4 Rim is rolled downwards and overhangs (110/120-200). Vindolanda 92 is in a deposit dated 235-250/260.

5D4.1 Cliffe S1/4b orange. HC. 110/120-160/180. At Custom House (Tatton-Brown 1974, 163, 190) occurs in early to mid-second century deposits. Common.

5D4.2 Cliffe S1/4b. PC. 110/120-160/180. A parallel was found with samian dated 70-100 (Tester 1961, 94). Common.

5D5 Rim is pinched outwards to an upward-pointing triangular section. 5D5.1 Upchurch S2/lb. JD. 110/120-150/170. Rare. 5D5.2 Cliffe S1/4b. HC. 110/120-150/170. Common.

5D5.3 Cliffe S1/4b. HC. 110/120-150/170. Dover 559 is dated 70-170. Southwark IVH4 is 140 onwards. Rare.

5D5.4 Cliffe S1/4b. HC. 110/120-150/170. Rare.

5D6 The rim is keyed into body and smoothed off. 5D6.1 Upchurch S1/lb. JD. 110/120-150/180. Rare.

5D7 With rounded body and rounded rim.

5D7.1 Cliffe S1/4b orange-pink. HC. 120/130-150/180. Rare.

5D7.2 Cliffe S1/4b. HC. 120/130-150/180. Southwark IVH1 is 130 onwards. The low body angle suggests a later second century date.

Unclassified.

5D0.1 Cliffe S1/4b. PC. 120-180. Rare.

5D0.2 Upchurch S1/lb. JD. 120-150/180. Rare.

5D0.3 Cliffe S1/4b orange-pink. HC. 120-150/180. Rare.

5D0.4 Cliffe S5/4b. HC. 120-180. Rare.

5D0.5 Upchurch S1/lb. FS. 120-180. Rare.

Class 5E Simple "dog dishes".

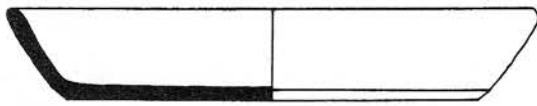
The design of this vessel is simple, obvious and widespread. Prototypes could extend back to the conquest period when the dish/platter form was introduced. 5E4 was the earliest variant, leading into 5E2 then 5E1. The class spawned 5F in the mid second century.

5E1 With straight, diagonal walls and normally a basal chamfer (130/160-260/300).

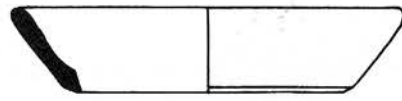
5E1.1 Cooling S1/6b. DF. 130/160-260, At Canterbury Castle, a vessel of this variant is dated 180-220 (146, 386). Pollard thinks this form is post-180 (pers. com.), The bevel is a second and third century feature. Abundant.

5E1.2 Cliffe S1/4b. HC. 130/160-260/300. Abundant. 5E1.3 Cliffe S1/4b. HC. 130/160-260/300. Abundant. 5E1.4 Upchurch S1/lb. DS. 130/160-200. Abundant.

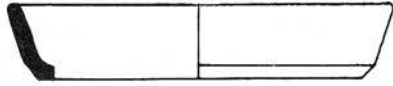
5E1.5 Cooling S1/6b, MC.DW. 170/190-210/230. Abundant. 5E1.6 Shorne S1/5b. MA. 130/160-260/300, Abundant. 5E1.7 Cooling S1/6b brown. EF. 130/160-260/300. Abundant.



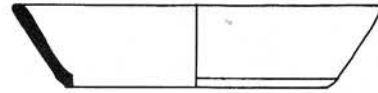
5E1.1



5E1.2



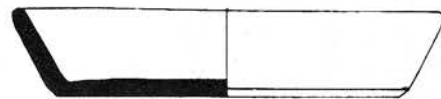
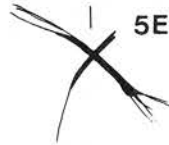
5E1.3



5E1.4



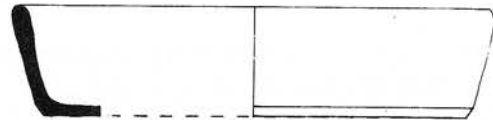
5E1.5



5E1.6



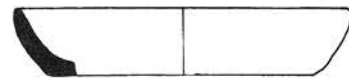
5E1.7



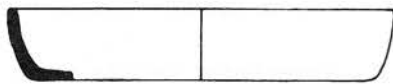
5E1.8



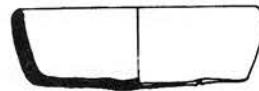
5E2.1



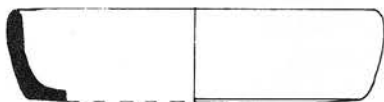
5E2.2



5E2.3



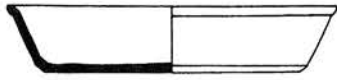
5E2.4



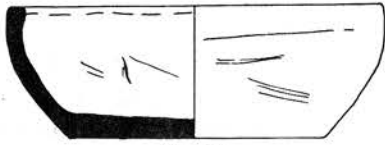
5E2.5



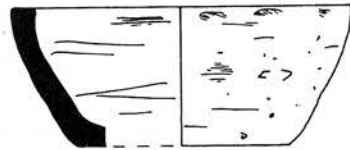
5E2.6



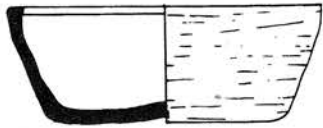
5E3.1



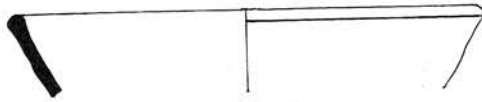
5E4.1



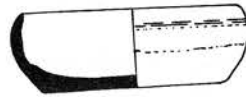
5E4.2



5E4.3



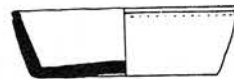
5E0.1



5E0.2



5E0.3



5E0.4

5E1.8 Cooling S1/6b. MC.TG. 170/190-210/230. Abundant.

5E2 With convex curved walls, normally without basal chamfer (110/120-210/300).

5E2.1 Upchurch S1/lb and S1/3b. MK 5 UC 25. 110/120-210/300. Oakleigh form GFI.i is dated 130-200 and is decorated with a sine wave. Dover 620 was with a coin of 168-169. Dover 753 was with samian dated 160-190. Southwark IVJ2 is dated 120-180. One vessel was found in the Chalk villa c. 300 (9.36). Vessel class may be ultimately derived from imports i.e. Cam 17, example 26, or Cam 39 of the mid-first century. Common. 5E2.2 Cliffe S1/4b orange-pink. HC. 110/120-210/300. May be related to conquest period forms, i.e. Thompson G1-11. Abundant.

5E2.3 Cliffe S1/4b orange-pink. HC. 110/120-210/300. Probably a misfire. Marsh 1978, type 200.5 is early second century. Abundant.

5E2.4 Upchurch N2/lb. RM 160. 110/120-210/300. Base cracked and warped. Vessel has a tight spiral swirl on base. Rare.

5E2.5 Cooling S1/6b. MC.LU/QL. 110/170-210/230. Common.

5E2.6 Cooling S1/6b. MC. 170/190-210/230. Common.

5E3 As 5E1, but with rim slightly rolled to produce a narrow bead. This variant is approaching 5C.

5E3.1 Higham S1/3b. 130-230. Reconstruction based on Oakleigh GF I.iii. Only common in SI/3b.

5E4 Deep dish with flattened, slightly in-turned rim (45-70).

This is the earliest dish form identified in the region. It could be the local progenitor of 5E2.

5E4.1 Cooling S3/6h. MC.SP. 50-70. V.G. Swan suggested (pers. com.) that the form is derived from TN Cam 16. The vessel even has a parody of an illiterate stamp; a pre-firing identity mark, which reinforces this idea. Common.

5E4.2 Cooling S3/6h orange. MC.PX. 50-70. Common. 5E4.3 Cooling S3/6 orange. EF. 50-70. Common.

Unclassified.

5E0.1 Cliffe S5/4b and S1/3b. HC. 100-150. Southwark IVJ3 and Oakleigh form GF II. Rare.

5E0.2 Shorne S1/5b. MA. 200-300. Allen 1959, 6. Rare. 5E0.3 Upchurch F2/lb. JD. 30-70. Rare.

5E0.4 Upchurch S1/lb. BM 96 2-8 3. 130-230. Cam 31d is mid first century. An example at Housteads is late second to early third century. This vessel could arguably belong to 5E3 or indeed to 5F. Rare.

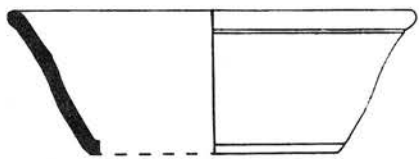
Class 5F Grooved dishes.

This class appears to be a modification of 5E1 circa AD 140. 5F2 could be a comparable modification of 5E2. The vessel is proportionately narrower and deeper than 5E. It is an indigenous development.

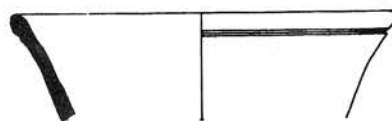
5F1 A deep dish with concave sides (130/140-230/250).

This is possibly an aberration on 5F3.

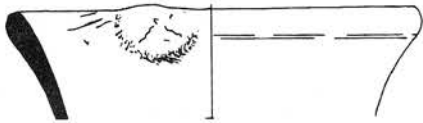
5F1.1 Cooling S1/6b. MC.AJR. 170/190-210/230. Common.



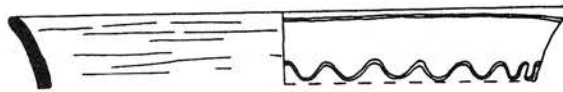
5F1.1



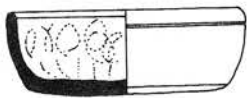
5F1.2



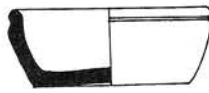
5F1.3



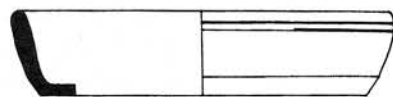
5F1.4



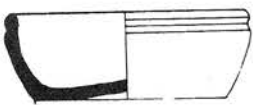
5F2.1



5F2.2



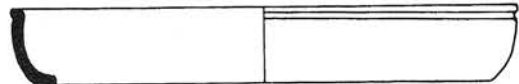
5F2.3



5F2.4



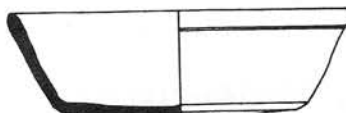
5F2.5



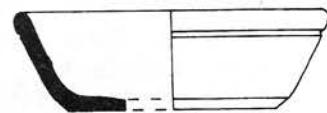
5F2.6



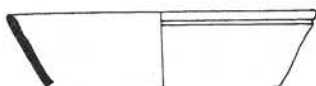
5F3.1



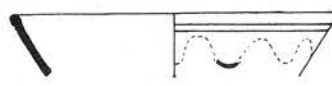
5F3.2



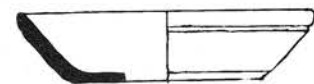
5F3.3



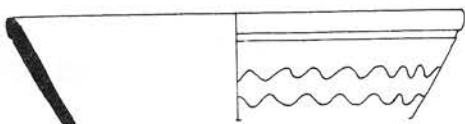
5F3.4



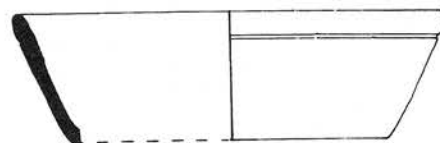
5F3.5



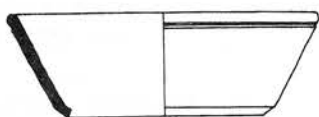
5F3.6



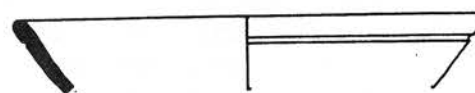
5F3.7



5F3.8



5F3.9



5F3.10

5F1.2 Cliffe Sl/4b. HC. 130/140-190/200. Dated 140-200 at Canterbury Burgate St (216, 476). None occur at Southwark, so a later second century date is suggested. Common.

5F1.3 Cooling Sl/6b and Sl/3b. MC.BF. 170/190-210/230. Waster-blistered. Oakleigh GFI.ii. Common.

5F1.4 Cooling Sl/6bs.MC.FT. 170/190-210/230. Rare. Under one in ten of 5F vessels are decorated, then only with a sine wave.

5F2 Shallow dish with convex sides, normally lacking a basal chamfer (130/140-180/230).

5F2.1 Upchurch Sl/lb. BM 56 7-1 5168. 130/140-180. If analogous to 5E2, then the vessel will predate 5F1. Rare.

5F2.2 Shorne Sl/5b. MA, 5-S-23. 130/140-180. Rare.

5F2.3 Cooling Sl/6b. MC.QX. 140/170-180. Ospringe 620 was associated with pots of c. AD 150. Vindolanda 38 was in level dated 223-225. Gillam 135 is dated 170-250. Rare.

5F2.4 Shorne Sl/5b. MA 5-S-20. 120/140-180. Richborough 167 and 168 were suspected to be either third or fourth century. Rare. 5F2.5 Cooling Sl/6b. MC.AEV. 170/190-210/230. Rare. 5F2.6 Cliffe Sl/4b. HC. 140-230. Rare.

5F3 With a straight wall at an obtuse angle, normally with a basal chamfer. This is the most common variant of 5F. It equates with Pollard's GFI.iii at Oakleigh (130/140-230/300).

5F3.1 Upchurch Sl/lb. BM 83 12-13 569. 130/140-210/230. With samian dated 150-180 at Dover (218) and with a coin dated 192- early third century (500). Ospringe 28 was dated 133-200. Cam 40b is dated 130 onwards. Form persists into fourth century deposits (West Kent 428 and 439). Abundant.

5F3.2 Cliffe Sl/4b. PC. 130/140-210/300. Abundant. 5F3.3 Upchurch Sl/lb. JD. 130/140-210. Common.

5F3.4 Cliffe Sl/4b. HC. 130/140-210/300. Ospringe 28 was dated to the mid second century. An example from Canterbury Burgate St. (218, 500) was dated 140-200. Abundant.

5F3.5 Cliffe Sl/4b. PC, 130/140-210/300. Abundant.

5F3.6 Cliffe Sl/4b. HC. 130/140-210/300. Gillam 320 is dated 350-400. Examples from Canterbury Defences are dated 100-180 (68, 18) and from the Castle (81, 404-9) dated 175-300. Abundant.

5F3.7 Cooling Sl/6b. MC.XZ. 170/190-210/230. Rare. The double sine wave is unusual but not unique.

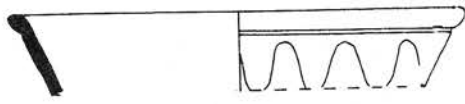
5F3.8 Cooling Sl/6b. MC.ACC. 170/190-210/230. Abundant. 5F3.9 Cooling Sl/6b. MC.PE. 170/190-210/230. Abundant.

5F3.10 Upchurch Sl/lb. JS. 130/140-210/300. Analysed as UB 69 (Monaghan 1982b). Common.

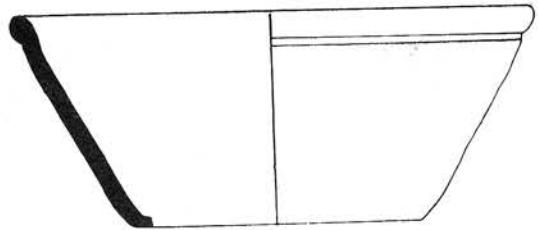
5F4 Straight walled, deep dish with a thickened, slightly out-turned rim (130/140-230/300).

5F4.1 Cliffe Sl/4b. HC. 130/140-210/300. Ospringe 14 was circa 130. Rare. 5F4.2 Cliffe Sl/4b. HC. 130/140-210/300. At Canterbury, examples are known with Antonine and later second century samian. Dover 675 was in late second century deposits. Rare.

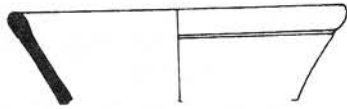
5F4.3 Cliffe Sl/4b. HC. 130/140-210/300. An example from Canterbury Castle (81, 404-9) was 175-300. Rare.



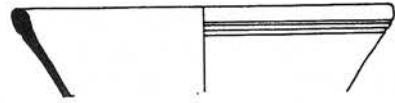
5F4.1



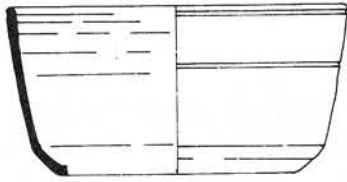
5F4.2



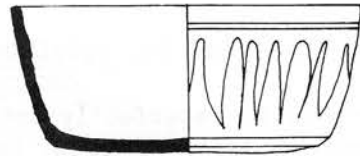
5F4.3



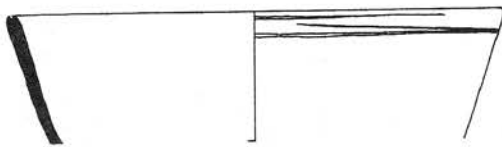
5F5.1



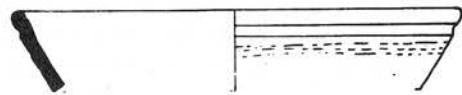
5F6.1



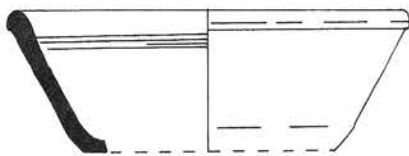
5F6.2



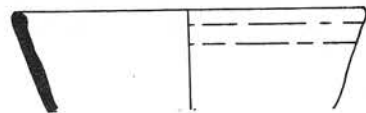
5F7.1



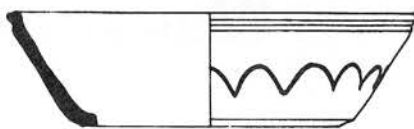
5F7.2



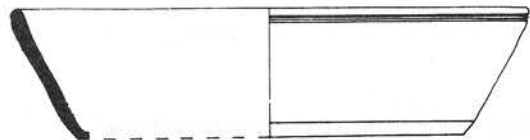
5F7.3



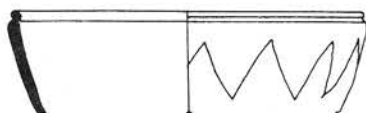
5F7.4



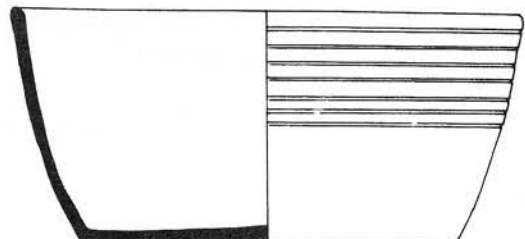
5F8.1



5F8.2



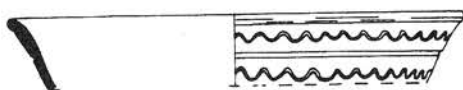
5F0.1



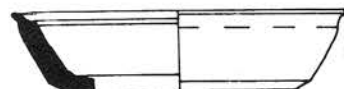
5F0.3



5F0.2



5F0.4



5F0.5

5F5 With multiple grooves.

5F5.1 Upchurch S1/lb. JD. 130-200. Vessel has two grooves conjoined. Rare.

5F6 Deep dish with almost vertical sides (150/180-270/300).

Technically this variant is deep enough to be a "bowl", but the rim does not recurve and so 5F6 is plainly part of the dish tradition.

5F6.1 Cliffe S1/4b. HC. 150/180-270/300, An example from Canterbury Defences was 270-290 (137, 17). Vessels from Dover were dated to the early third century by coins (218, 500) and to the period 150-180 by samian and coins (222, 570 and 578). Vindolanda 71 was dated to c. 235. Rare.

5F6.2 Upchurch S1/lb. RW. 150/180-270/300. Rare.

5F7 The groove is imperfectly cut and may be multiple (130/140-250). This variant is fairly common, but it is probable that all are accidental attempts at other variants. It is possible that some potters were satisfied with a product intermediate between 5F and 5E. 5F7.1 Cooling S1/6b. MC.MP.

170/190-210/230. Rare. 5F7.2 Upchurch S1/lb. S1/lb. JD. 140-200. Rare. 5F7.3 Cooling S1/6b. KC.DI. 170/190-210/230. Rare. 5F7.4 Upchurch S1/1. FS. 140-200. Rare.

5F8 With a deep, angular groove close to the rim (140-240).

Most vessels of other variants have shallow, round-bottomed grooves.

5F8.1 Upchurch S1/lb. JS. 140-200. Rare.

5F8.2 Cooling S1/6b. MC.WZ. 170/190-210/230. Rare.

Unclassified.

5F0.1 Shorne S1/5b. MA. 140-200. Unique.

5F0.2 Shorne S1/5b. MA. 140-300. Unique.

5F0.3 Cooling S1/6. MC. 170/190-210/230. Unique.

5F0.4 Cooling S1/6b orange. MC.PM. 170/190-210/230. Rare.

5F0.5 Upchurch S1/lb orange. JD. 100-200. Unique. Possibly not a 5F at all.

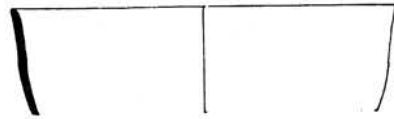
Dishes which remain unclassified.

500.1 Cooling S5/6b. MC.QL. 150-230. Rare.

500.2 Cooling C1/6h. MC.AES. 50-100. Rare.

500.3 Cooling S3/6hb. MC.AEW. 170/190-210/230. Rare.

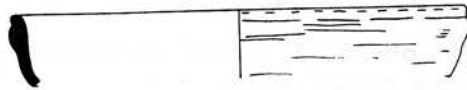
500.4 Cliffe S1/4b. HC. Rare.



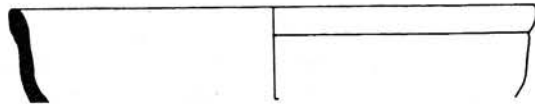
500·1



500·2



500·3



500·4

[To Contents page](#)